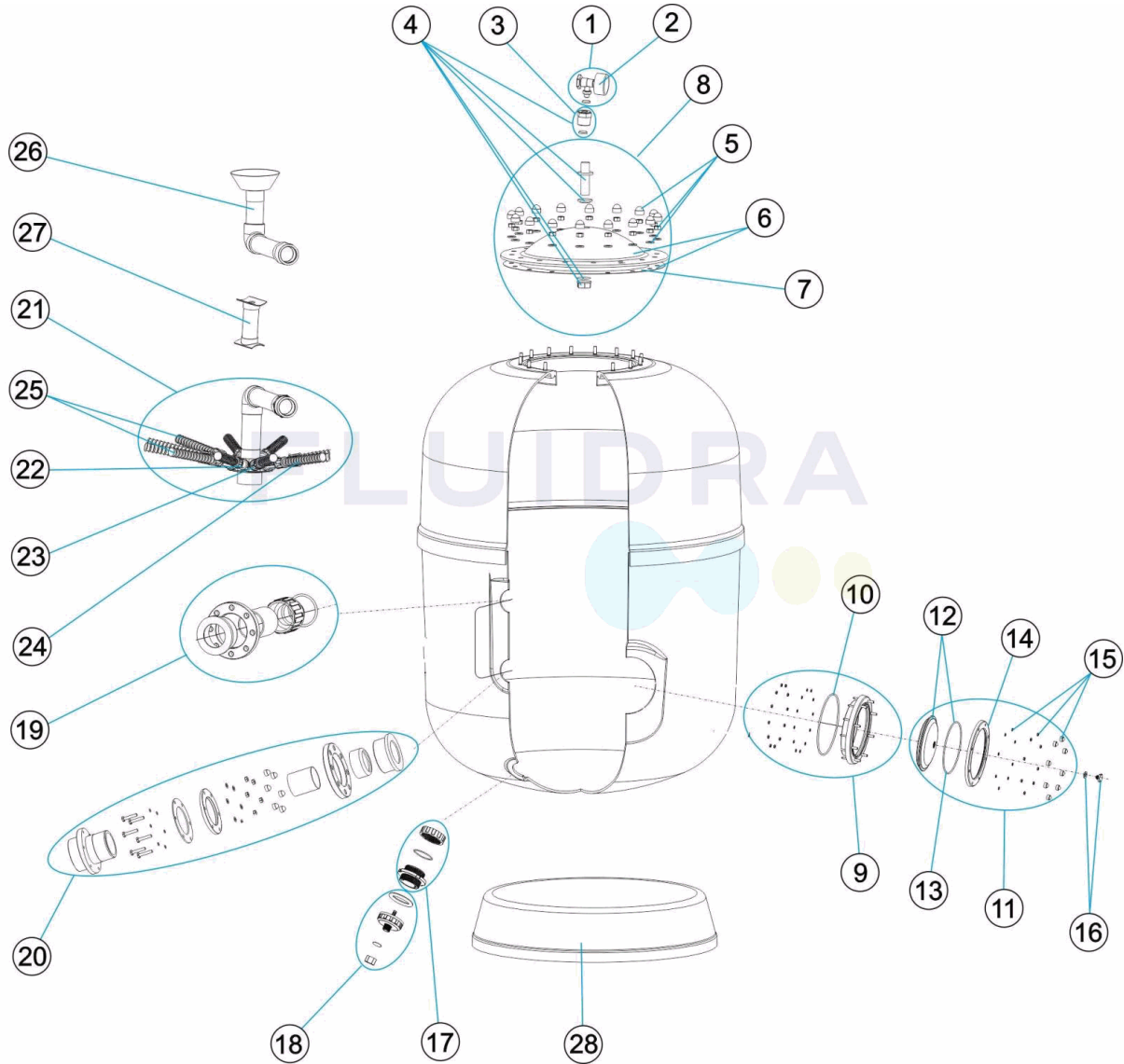


CODIGO **36055, 36056**

DESCRIPCION: **FILTROS ARTIC PLUS D. 1050-1200**



ESPAÑOL

POS	CODIGO	DESCRIPCION	POS	CODIGO	DESCRIPCION
1	4404080104	MANOMETRO COMPLETO	15	4404260107	TORNILLERIA ARO FIJACION VALVULA
2	4404010103	MANOMETRO 1/8" 3 KG./C "	16	4404290101	TAPON PURGA 1/4" ANONIM "
3	4404100001	TAPON Y JUNTA 3/4-1/4"	17	4404260501	MANGUITO BOCA DESCARGA
4	4404260210	FIJACION MANOMETRO	18	4404180114	PURGA ARENA 2'
5	4404160103	TORNILLERIA TAPA FILTRO	19	* 4404260218	CJTO. SALIDA D. 90 - 3"
6	4404260208	TAPA FILTRO + JUNTA	20	* 4404260412	GRUPO SALIDA D. 110 VOLCANO
7	4404160101	JUNTA TORICA TAPA	21	* 4404160274	CJTO. COLECTOR D. 1050-90
8	4404260207	TAPA FILTRO COMPLETA	21	* 4404160275	CJTO. COLECTOR D. 1200-110
9	4404160809	ARO CUELLO 20 TORNILLOS	22	* 4404260419	BRAZO COLECTOR 1" 100 M "
10	4404020116	JUNTA TORICA 255X4	23	* 4404260418	MANGUITO ENLACE UNION 1"
11	4404303002	GRUPO TAPA NEGRA FILTRO A/TORNILLOS	24	* 4404300916	BRAZO COLECTOR 1" 225 M "
12	4404190303	TAPA TRANSPARENTE D. 220 + JUNTA	24	* 4404290109	BRAZO COLECTOR 1" 265 M "
13	4404260106	JUNTA ARO FIJACION VALVULA	25	* 4404260401	CJTO. BRAZOS COLECTOR D. 950 - 1050

*** -> VER HOJA DE OBSERVACIONES**

CODIGO 36055, 36056

DESCRIPCION: FILTROS ARTIC PLUS D. 1050-1200

14	4404160849	ARO FIJACION TAPA	25	* 4404260402	CJTO. BRAZOS COLECTOR D.1200
26	* 4404160276	CJTO. DIFUSOR D. 1050-90	27	* 36056R0423	SOPORTE COLECTOR - DIFUSOR D.1200
26	* 4404160277	CJTO. DIFUSOR D. 1200-110	28	* 20070R0151	PIE FILTRO D. 1050
27	* 36055R0423	SOPORTE COLECTOR - DIFUSOR D. 1050	28	* 20068R0151	PIE FILTRO D. 1200

CODIGO 36055, 36056

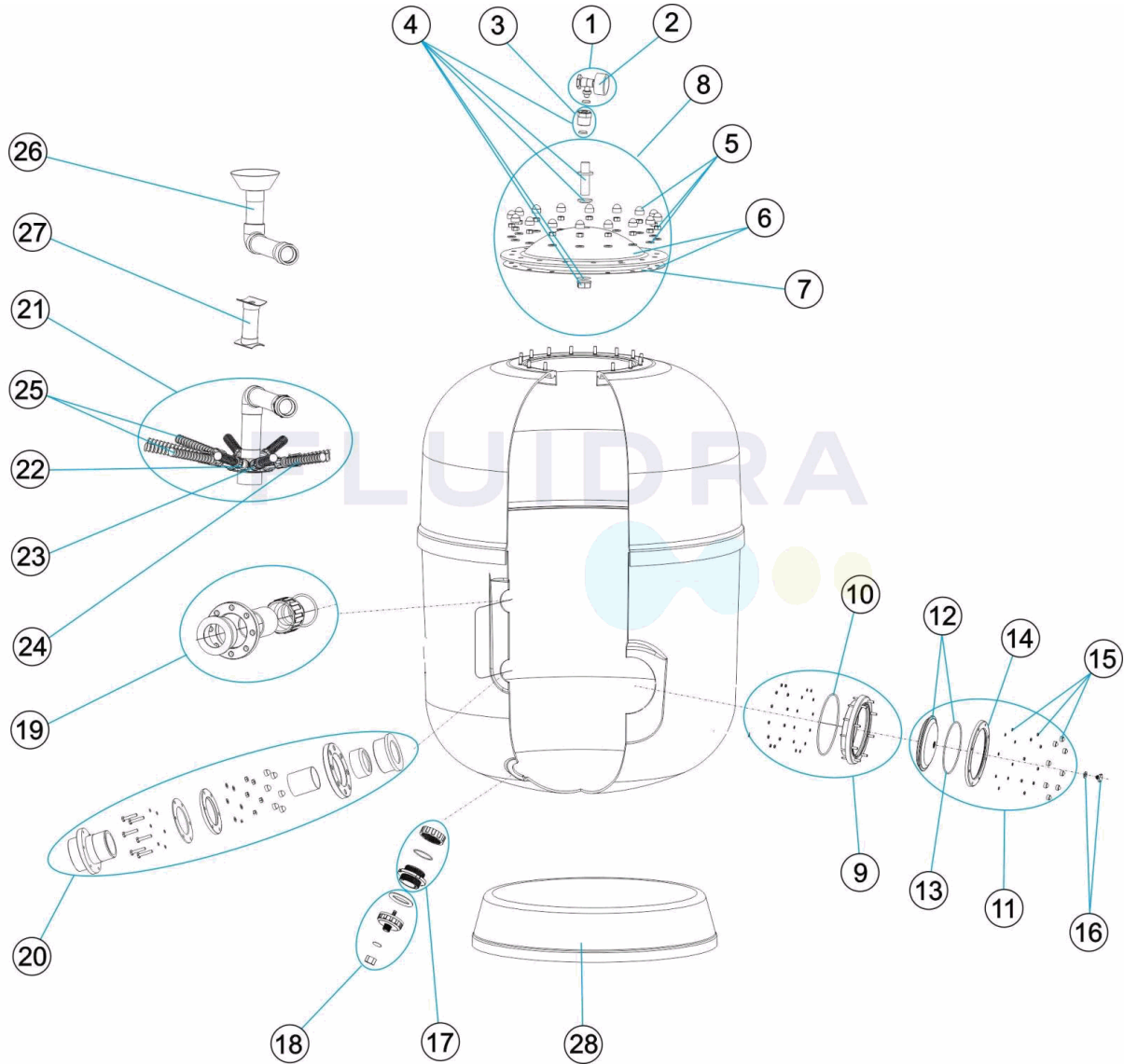
DESCRIPCION: FILTROS ARTIC PLUS D. 1050-1200

OBSERVACIONES

POS	CODIGO	OBSERVACIONES
19	4404260218	PARA: 36055
20	4404260412	PARA: 36056
21	4404160274	PARA: 36055
21	4404160275	PARA: 36056
22	4404260419	PARA: 36055 [3UT], 36056 [3UT]
23	4404260418	PARA: 36055 [3UT], 36056 [3UT]
24	4404300916	PARA: 36055 [6UT]
24	4404290109	PARA: 36056 [6UT]
25	4404260401	PARA: 36055
25	4404260402	PARA: 36056
26	4404160276	PARA: 36055
26	4404160277	PARA: 36056
27	36055R0423	PARA: 36055
27	36056R0423	PARA: 36056
28	20070R0151	PARA: 36055
28	20068R0151	PARA: 36056

CODE **36055, 36056**

DESCRIPTION: **FILTRES ARTIC PLUS D. 650-800-950**



FRANCAIS

POS	CODE	DESCRIPTION	POS	CODE	DESCRIPTION
1	4404080104	MANOMETRE COMPLET	15	4404260107	VIS BRIDE FIXATION VANNE TOP
2	4404010103	MANOMETRE 1/8" 3 KG./C "	16	4404290101	BOUCHON PURGE 1/4" ANONYM "
3	4404100001	BOUCHON ET JOINT 3/4-1/4"	17	4404260501	RACCORD DÉCHARGE
4	4404260210	FIXATION MANOMETRE	18	4404180114	PURGE SABLE 2"
5	4404160103	VISSERIE COUVERCLE DE FILTRE	19	* 4404260218	ENSEMBLE SORTIE D. 90 - 3"
6	4404260208	COUVERCLE FILTRE + JOINT	20	* 4404260412	ENSEMBLE SORTIE D. 110 VOLCANO
7	4404160101	JOINT TORIQUE COUVERCLE	21	* 4404160274	ENSEMBLE COLLECTEUR D. 1050-90
8	4404260207	COUVERCLE DE FILTRE COMPLETE	21	* 4404160275	ENSEMBLE COLLECTEUR D. 1200-110
9	4404160809	BRIDE GORGE 20 VIS	22	* 4404260419	BRAS DE REPARTITEUR 1" 100M "
10	4404020116	JOINT TORIQUE 255X4	23	* 4404260418	MANCHON UNION 1"
11	4404303002	ENSEMBLE COUVERCLE	24	* 4404300916	BRAS DE REPARTITEUR 1" 225 M "
12	4404190303	COUVERCLE TRANSPARENT D.220 + JOINT	24	* 4404290109	BRAS DE REPARTITEUR 1" 265 M/M "
13	4404260106	JOINT BRIDE FIXATION VANNE TOP	25	* 4404260401	ENSEMBLE BRAS DE REPARTITEUR D. 950-1050

*** -> VOIR FICHE D'OBSERVATIONS**

CODE **36055, 36056**

DESCRIPTION: **FILTRES ARTIC PLUS D. 650-800-950**

14	4404160849	BRIDE DE FIXATION COUVERCLE	25	* 4404260402	ENSEMBLE BRAS DE REPARTITEUR D. 1200
26	* 4404160276	ENSEMBLE DIFFUSEUR D. 1050-90	27	* 36056R0423	SUPPORT COLLECTEUR D. 1200
26	* 4404160277	ENSEMBLE DIFFUSEUR D. 1200-110	28	* 20070R0151	SOCLE FILTRE D.1050
27	* 36055R0423	SUPPORT COLLECTEUR D. 1050	28	* 20068R0151	SOCLE FILTRE D.1200

CODE **36055, 36056**

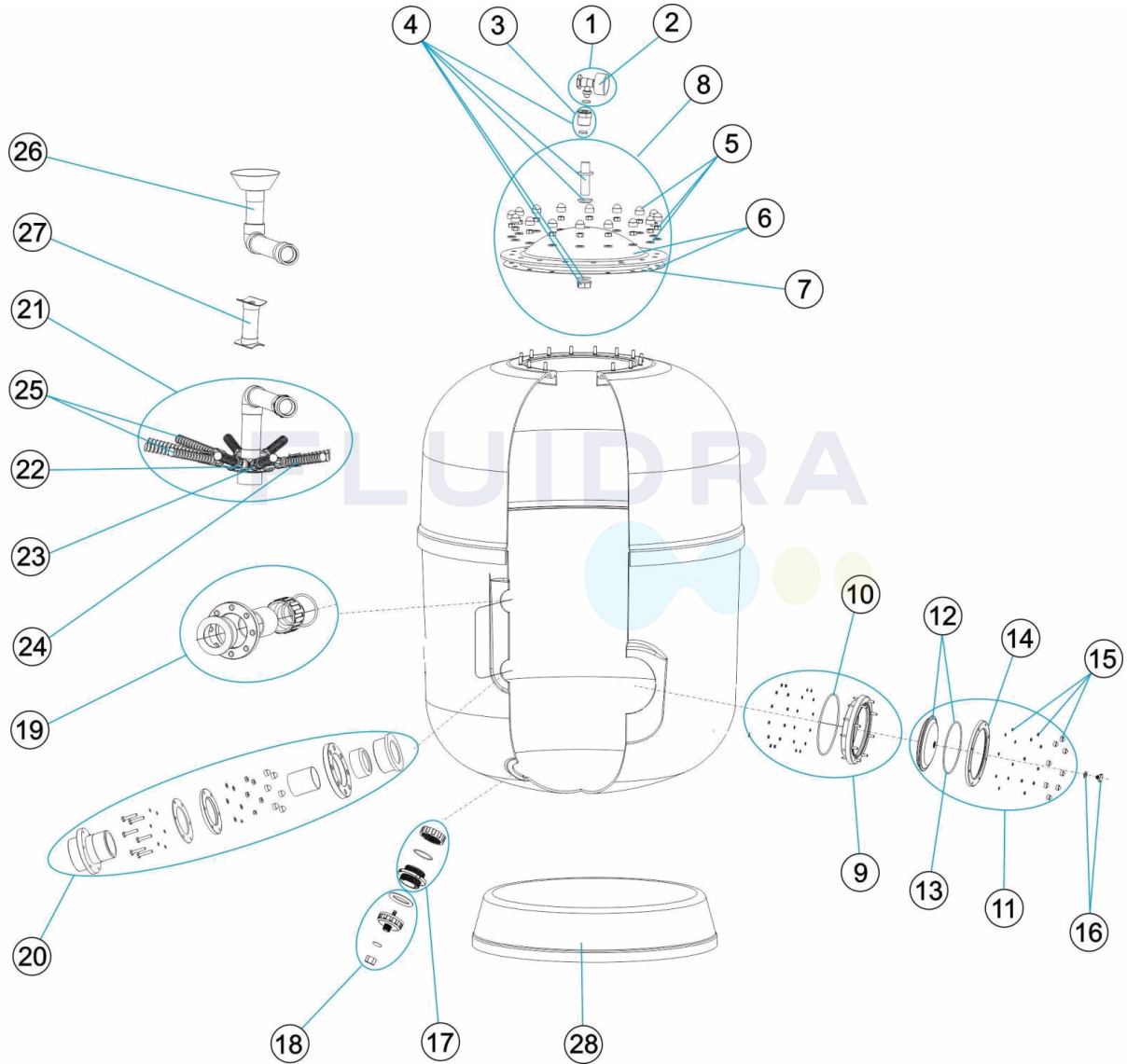
DESCRIPTION: **FILTRES ARTIC PLUS D. 650-800-950**

OBSERVATIONS

POS	CODE	OBSERVATIONS
19	4404260218	POUR: 36055
20	4404260412	POUR: 36056
21	4404160274	POUR: 36055
21	4404160275	POUR: 36056
22	4404260419	POUR: 36055 [3UT], 36056 [3UT]
23	4404260418	POUR: 36055 [3UT], 36056 [3UT]
24	4404300916	POUR: 36055 [6UT]
24	4404290109	POUR: 36056 [6UT]
25	4404260401	POUR: 36055
25	4404260402	POUR: 36056
26	4404160276	POUR: 36055
26	4404160277	POUR: 36056
27	36055R0423	POUR: 36055
27	36056R0423	POUR: 36056
28	20070R0151	POUR: 36055
28	20068R0151	POUR: 36056

CODE **36055, 36056**

DESCRIPTION: **ARTIC PLUS D. 650-800-950 FILTERS**



ENGLISH

POS	CODE	DESCRIPTION	POS	CODE	DESCRIPTION
1	4404080104	COMPLETE PRESSURE GAUGE UNIT	15	4404260107	VALVE TOP FIXING RING SCREWS
2	4404010103	PRESSURE GAUGE 1/8" 3 KG./C "	16	4404290101	ANONYMOUS CAP
3	4404100001	PLUG AND GASKET 3/4-1/4"	17	4404260501	BUSH FOR DISCHARGE
4	4404260210	PRESSURE GAUGE ANCHOR	18	4404180114	SAND PURGE 2'
5	4404160103	FILTER LID BOLTS	19	* 4404260218	D. 90 - 3" OUTLET ASSEMBL "
6	4404260208	FILTER LID + GASKET	20	* 4404260412	SET OUTLET D.110 VOLCANO
7	4404160101	LID 'O' RING	21	* 4404160274	COLLECTOR ASSEMBLY D. 1050-90
8	4404260207	FILTER LID UNIT	21	* 4404160275	COLLECTOR ASSEMBLY D. 1200-110
9	4404160809	20-SCREW NECK RING	22	* 4404260419	MANIFOLD ARM 1" 100 M "
10	4404020116	O' RING 255X4	23	* 4404260418	UNION 1"
11	4404303002	SET LID	24	* 4404300916	MANIFOLD ARM 1" 225 M "
12	4404190303	TRANSPARENT LID D.220 + 'O' RING	24	* 4404290109	COLLECTOR ARM 1" 265 M "
13	4404260106	VALVE TOP RING FIXING GASKET	25	* 4404260401	MANIFOLD ARM ASSEMBLY D. 950-1050

*** -> SEE OBSERVATIONS SHEET**

CODE **36055, 36056**

DESCRIPTION: **ARTIC PLUS D. 650-800-950 FILTERS**

14	4404160849	LIF FIXING RING	25	* 4404260402	MANIFOLD ARM ASSEMBLY D. 1200
26	* 4404160276	DIFFUSER ASSEMBLY D. 1050-90	27	* 36056R0423	SOPORTE COLECTOR - DIFUSOR D. 1200
26	* 4404160277	DIFFUSER ASSEMBLY D. 1200-110	28	* 20070R0151	FILTER BASE D. 1050
27	* 36055R0423	SOPORTE COLECTOR - DIFUSOR D. 1050	28	* 20068R0151	FILTER BASE D. 1200

CODE **36055, 36056**

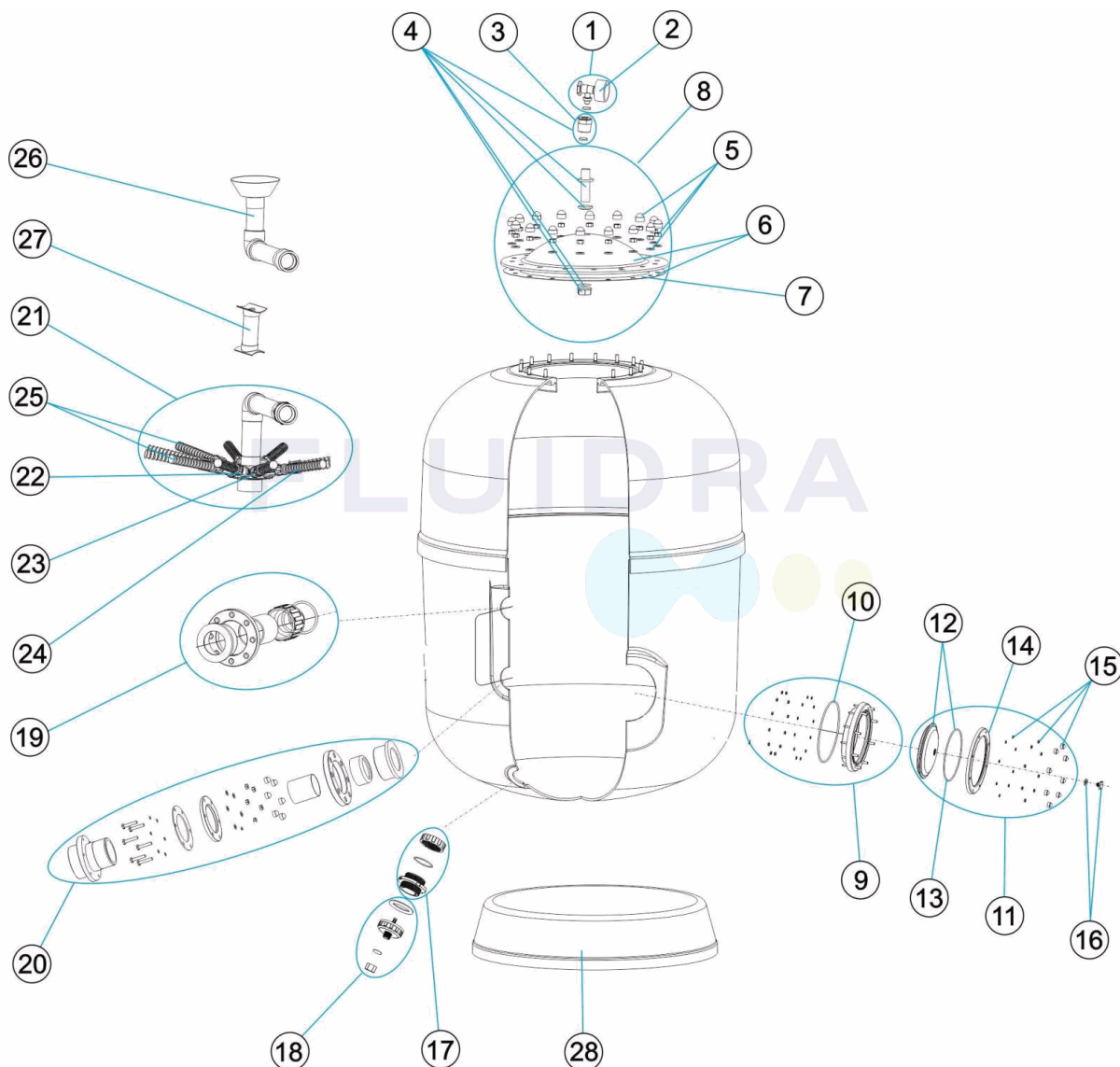
DESCRIPTION: **ARTIC PLUS D. 650-800-950 FILTERS**

OBSERVATIONS

POS	CODE	OBSERVATIONS
19	4404260218	FOR: 36055
20	4404260412	FOR: 36056
21	4404160274	FOR: 36055
21	4404160275	FOR: 36056
22	4404260419	FOR: 36055 [3UT], 36056 [3UT]
23	4404260418	FOR: 36055 [3UT], 36056 [3UT]
24	4404300916	FOR: 36055 [6UT]
24	4404290109	FOR: 36056 [6UT]
25	4404260401	FOR: 36055
25	4404260402	FOR: 36056
26	4404160276	FOR: 36055
26	4404160277	FOR: 36056
27	36055R0423	FOR: 36055
27	36056R0423	FOR: 36056
28	20070R0151	FOR: 36055
28	20068R0151	FOR: 36056

CODICE **36055, 36056**

DESCRIZIONE: **FILTRI ARTIC PLUS D. 650-800-950**



ITALIANO

POS	CODICE	DESCRIZIONE	POS	CODICE	DESCRIZIONE
1	4404080104	MANOMETRO COMPLETO	15	4404260107	BULLONERIA PER FLANGIA FISSAGGIO VALVOLE TOP
2	4404010103	MANOMETRO 1/8" 3 KG./C "	16	4404290101	TAPPO 1" 1/4 SCARICO ANONIM "
3	4404100001	TAPPO ET GUARNIZIONE 3/4-1/4"	17	4404260501	MANICOTTO SCARICA
4	4404260210	FISSAGGIO MANOMETRO	18	4404180114	SCARICO SABBIA 2'
5	4404160103	BULLONERIA COPERCHIO FILTRO	19	* 4404260218	GRUPPO USCITA D. 90 - 3"
6	4404260208	COPERCHIO FILTRO + GUARNIZIONE	20	* 4404260412	GRUPPO USCITA D.110 VOLCANO
7	4404160101	O-RING COPERCHIO	21	* 4404160274	KIT COLLETTORE D. 1050-90
8	4404260207	COPERCHIO FILTRO COMPLETO	21	* 4404160275	KIT COLLETTORE D. 1200-110
9	4404160809	ANELLO COLLO 20 VITI	22	* 4404260419	CANDELOTTO COLLECTORE 1" 100M "
10	4404020116	O-RING 255X4	23	* 4404260418	MANICOTTO DA 1" PER CANDELOTT "
11	4404303002	GRUPPO COPERCHIO	24	* 4404300916	CANDELOTTO COLLECTORE 1" 225 M "
12	4404190303	COPERCHIO TRASPARENTE D.220 + O-RING	24	* 4404290109	CANDELOTTO 1" 265 M/M "
13	4404260106	GUARNIZIONE FLANGIA FISSAGGIO VALVOLE TOP	25	* 4404260401	GRUPPO CANDELOTTO COLLECTORE D. 950-1050

*** -> SI FACCIAMO RIFERIMENTO AL FOGLIO DELLE OSSERVAZIONI**

CODICE **36055, 36056**

DESCRIZIONE: **FILTRI ARTIC PLUS D. 650-800-950**

14	4404160849	FLANGIA FISSAGGIO COPERCHIO	25	* 4404260402	GRUPPO CANDELOTTO COLLECTORE D. 1200
26	* 4404160276	RACCORDO DIFFUSORE D. 1050-90	27	* 36056R0423	SUPPORTO COLLETTORE D. 1200
26	* 4404160277	RACCORDO DIFFUSORE D. 1050-90	28	* 20070R0151	BASE FILTRO D 1050
27	* 36055R0423	SUPPORTO COLLETTORE D. 1050	28	* 20068R0151	BASE FILTRO D 1200

CODICE **36055, 36056**

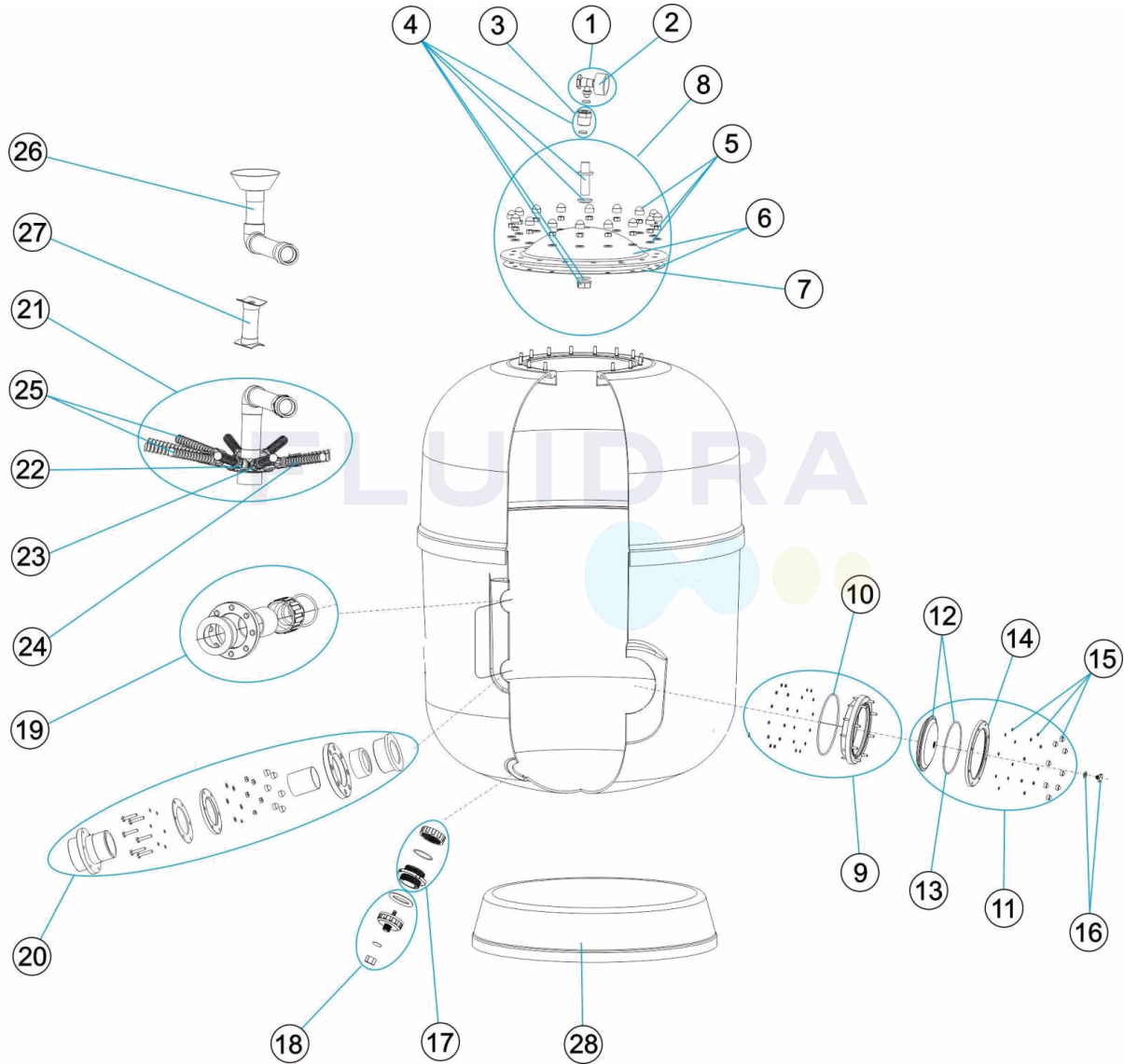
DESCRIZIONE: **FILTRI ARTIC PLUS D. 650-800-950**

OSSERVAZIONI

POS	CODICE	OSSERVAZIONI
19	4404260218	PER: 36055
20	4404260412	PER: 36056
21	4404160274	PER: 36055
21	4404160275	PER: 36056
22	4404260419	PER: 36055 [3UT], 36056 [3UT]
23	4404260418	PER: 36055 [3UT], 36056 [3UT]
24	4404300916	PER: 36055 [6UT]
24	4404290109	PER: 36056 [6UT]
25	4404260401	PER: 36055
25	4404260402	PER: 36056
26	4404160276	PER: 36055
26	4404160277	PER: 36056
27	36055R0423	PER: 36055
27	36056R0423	PER: 36056
28	20070R0151	PER: 36055
28	20068R0151	PER: 36056

CODE 36055, 36056

BESCHREIBUNG: FILTER ARTIC PLUS D. 1050-1200



DEUTSCH

POS	CODE	BESCHREIBUNG	POS	CODE	BESCHREIBUNG
1	4404080104	MANOMETER KOMPLETT	15	4404260107	SCHRAUBENSATZ FIXIERRING VENTIL
2	4404010103	MANOMETER 1/8" 3 KG/C "	16	4404290101	ABLASSSTOPFEN 1/4" ANONY "
3	4404100001	STOPFEN UND DICHTUNG 3/4 - 1/4"	17	4404260501	NIPPEL DÜSE AUSLASS
4	4404260210	FIXIERUNG MANOMETER	18	4404180114	SANDENTLEERUNG 2'
5	4404160103	SCHRAUBENSATZ FILTERDECKEL	19	* 4404260218	SET AUSGANG D. 90 - 3"
6	4404260208	FILTERDECKEL UND DICHTUNG	20	* 4404260412	GRUPPE AUSGANG D. 110 VOLCANO
7	4404160101	O-RING ABDECKUNG	21	* 4404160274	SAMMELROHRSET D. 1050 - 90
8	4404260207	FILTERDECKEL KOMPLETT	21	* 4404160275	SAMMELROHRSET D. 1200 - 110
9	4404160809	FILTERRING 20 SCHRAUBEN	22	* 4404260419	FILTERSTERN-SCHLITZROHR 1" 100 M "
10	4404020116	O-RING 255 X 4	23	* 4404260418	NIPPEL ANSCHLUSSVERBINDUNG 1"
11	4404303002	GRUPPE FILTERDECKEL SCHWARZ MIT SCHRAUBE	24	* 4404300916	FILTERSTERN-SCHLITZROHR 1" 225 M "
12	4404190303	ABDECKUNG TRANSPARENT D. 220 UND DICHTUNG	24	* 4404290109	FILTERSTERN-SCHLITZROHR 1" 265 M "
13	4404260106	DICHTUNG FIXIERRING VENTIL	25	* 4404260401	SET FILTERSTERN-SCHLITZROHR D. 950 - 1050

* -> SIEHE ANMERKUNGSBLATT

CODE **36055, 36056**

BESCHREIBUNG: **FILTER ARTIC PLUS D. 1050-1200**

14	4404160849	FIXIERRING ABDECKUNG	25	* 4404260402	SET FILTERSTERN-SCHLITZROHR D. 1200
26	* 4404160276	SET WASSERVERTEILER D. 1050 - 90	27	* 36056R0423	HALTERUNG SAMMELROHR - WASSERVERTEILER
26	* 4404160277	SET WASSERVERTEILER D. 1200 - 110	28	* 20070R0151	FILTERFUSS D. 1050
27	* 36055R0423	HALTERUNG SAMMELROHR - WASSERVERTEILER	28	* 20068R0151	FILTERFUSS D. 1200

CODE **36055, 36056**

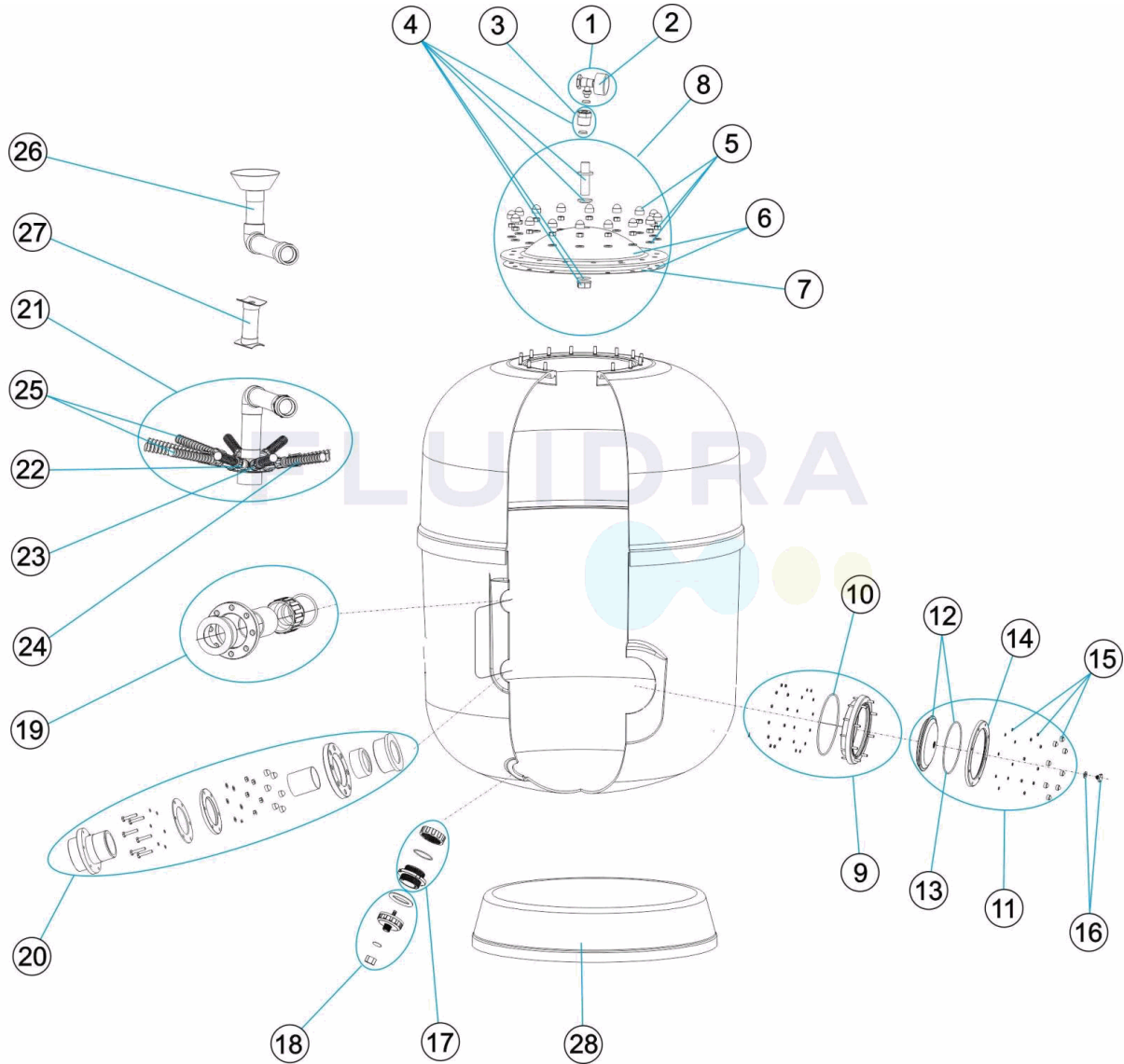
BESCHREIBUNG: **FILTER ARTIC PLUS D. 1050-1200**

HINWEISE

POS	CODE	HINWEISE
19	4404260218	FÜR: 36055
20	4404260412	FÜR: 36056
21	4404160274	FÜR: 36055
21	4404160275	FÜR: 36056
22	4404260419	FÜR: 36055 [3UT], 36056 [3UT]
23	4404260418	FÜR: 36055 [3UT], 36056 [3UT]
24	4404300916	FÜR: 36055 [6UT]
24	4404290109	FÜR: 36056 [6UT]
25	4404260401	FÜR: 36055
25	4404260402	FÜR: 36056
26	4404160276	FÜR: 36055
26	4404160277	FÜR: 36056
27	36055R0423	FÜR: 36055
27	36056R0423	FÜR: 36056
28	20070R0151	FÜR: 36055
28	20068R0151	FÜR: 36056

CODIGO **36055, 36056**

DESCRIÇÃO: **FILTROS ARTIC PLUS D. 650-800-950**



PORTUGUES

POS	CODIGO	DESCRIÇÃO	POS	CODIGO	DESCRIÇÃO
1	4404080104	MANÔMETRO COMPLETO	15	4404260107	PARAFUSOS ARO FIXAÇÃO VALVULA TOP
2	4404010103	MANOMETRO 1/8" 3 KG./C "	16	4404290101	TAMPAO PURGA 1/4" ANONIM "
3	4404100001	TAMPÃO E JUNTA 3/4-1/4"	17	4404260501	MANGUITO DESCARREGA
4	4404260210	FIXAÇÃO MANOMETRO	18	4404180114	PURGA AREIA 2"
5	4404160103	PARAFUSOS TAMPA FILTRO	19	* 4404260218	CONJUNTO SAÍDA D. 90 - 3"
6	4404260208	TAMPA FILTRO + JUNTA	20	* 4404260412	RACORD DE SAÍDA D.110 VOLCANO
7	4404160101	JUNTA TÔRICA TAMPA	21	* 4404160274	CONJ. COLECTOR D. 1050-90
8	4404260207	TAMPA FILTRO COMPLETO	21	* 4404160275	CONJ. COLECTOR D. 1200-110
9	4404160809	ARO PESCOÇOÇO 20 PARAFUSOS	22	* 4404260419	BRAÇO COLECTOR 1" 100M "
10	4404020116	JUNTA TÔRICA 255X4	23	* 4404260418	RACCORD UNIÃO 1"
11	4404303002	CONJUNTO TAMPA	24	* 4404300916	BRAÇO COLECTOR 1" 225 M "
12	4404190303	TAMPA TRANSPARENTE D.220 + JUNTA	24	* 4404290109	BRAÇO COLECTOR 1" 265 M/M "
13	4404260106	JUNTA ARO FIXAÇÃO VALVULA TOP	25	* 4404260401	CJTO. BRAÇO COLECTOR D.950-1050

*** -> VEJA A FICHA DE OBSERVAÇÕES**

CODIGO 36055, 36056

DESCRIÇÃO: FILTROS ARTIC PLUS D. 650-800-950

14	4404160849	ARO FIXAÇÃO TAMPA	25	* 4404260402	CJTO. BRAÇO COLECTOR D.1200
26	* 4404160276	CJTO. DIFUSOR D. 1050-90	27	* 36056R0423	SUPORTE COLECTOR D. 1200
26	* 4404160277	CJTO. DIFUSOR D. 1200-110	28	* 20070R0151	PÉ FILTRO D 1050
27	* 36055R0423	SUPORTE COLECTOR D. 1050	28	* 20068R0151	PÉ FILTRO D 1200

CODIGO 36055, 36056

DESCRIÇÃO: FILTROS ARTIC PLUS D. 650-800-950

OBSERVAÇÕES

POS	CODIGO	OBSERVAÇÕES
19	4404260218	PARA: 36055
20	4404260412	PARA: 36056
21	4404160274	PARA: 36055
21	4404160275	PARA: 36056
22	4404260419	PARA: 36055 [3UT], 36056 [3UT]
23	4404260418	PARA: 36055 [3UT], 36056 [3UT]
24	4404300916	PARA: 36055 [6UT]
24	4404290109	PARA: 36056 [6UT]
25	4404260401	PARA: 36055
25	4404260402	PARA: 36056
26	4404160276	PARA: 36055
26	4404160277	PARA: 36056
27	36055R0423	PARA: 36055
27	36056R0423	PARA: 36056
28	20070R0151	PARA: 36055
28	20068R0151	PARA: 36056